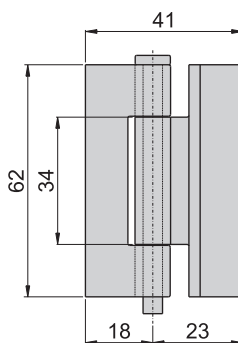


鉸  
鏈

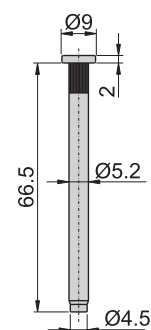
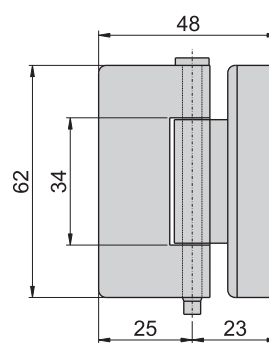
1090#-SR-1



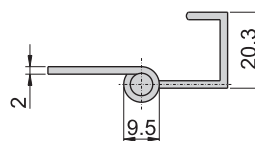
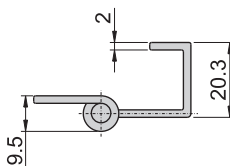
1090#-SR-1



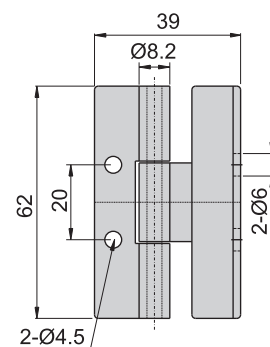
1090#-SR-2



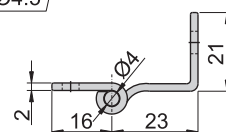
材 質	不鏽鋼 (SUS 304)
表面處理	主體---材料本質 心軸---電鍍



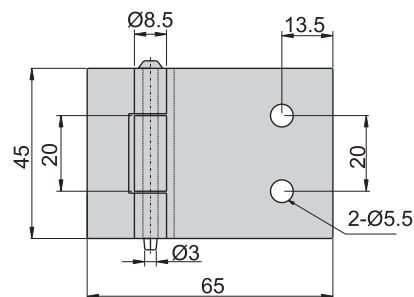
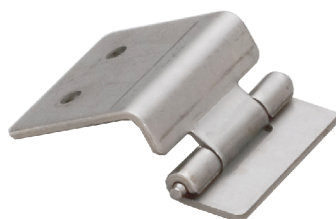
B-90-L4



材 質	鐵
表面處理	鍍鋅



B-1090-L2



材 質	B-1090-L2---不鏽鋼 (SUS 304) B-90-L2---鐵
表面處理	材料本質

