

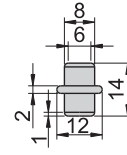
1082#-R



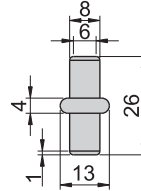
1082#-L



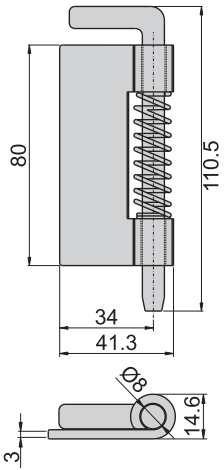
1082#-1



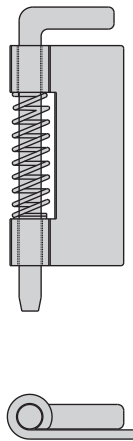
82#-2



1082#-R
82#-R



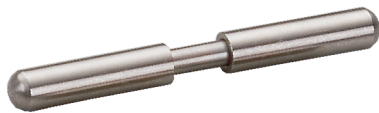
1082#-L
82#-L



材 質	1082#、1082#-1、1082#-2---不鏽鋼 (SUS 304)
	82#、82#-1、82#-2---鐵
表面處理	82# 葉子---材料本質
	心軸---電鍍
	82#-1、82#-2---電鍍

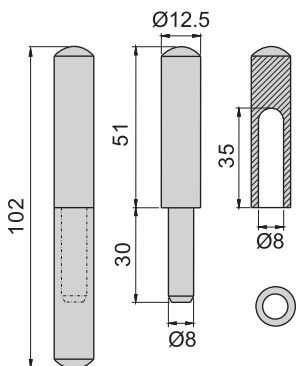
鉸
鏈

炸彈後鈕

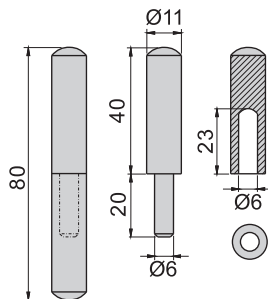


材 質	鐵
表面處理	材料本質

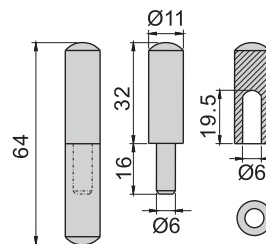
B-322-100



B-322-80



B-322-60



B-322-50

