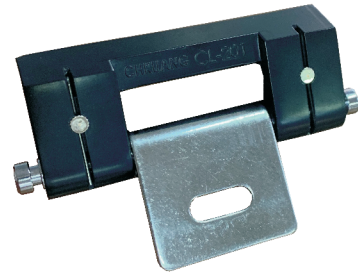


CL-201(S)-1702#-3

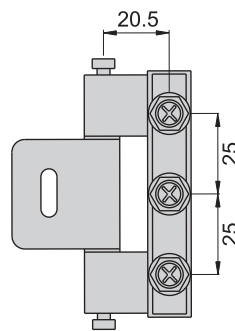
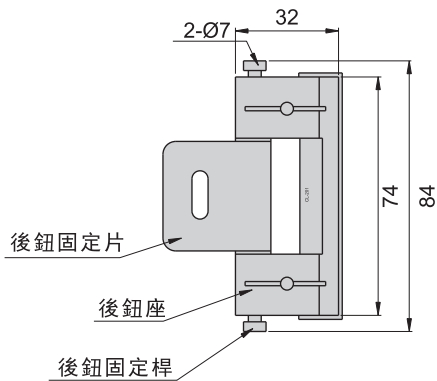


CL-201(B)-1702#-3

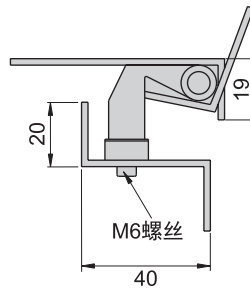


鉸
鏈

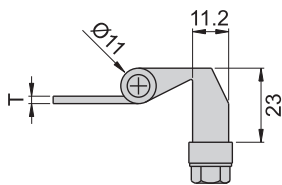
CL-201



安裝示意圖

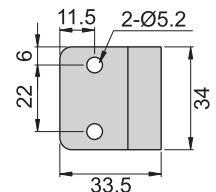


1702# T=2m/m
702# T=2.3m/m

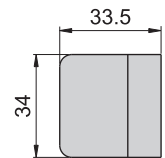


可搭配固定片

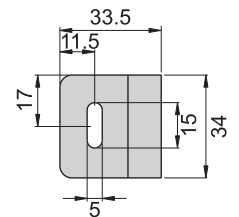
1702#-1
702#-1



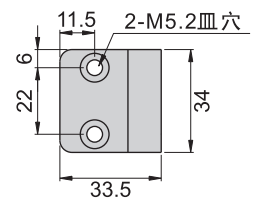
1702#-2
702#-2



1702#-3
702#-3



702#-1(B)



材 質	後鈕座---鋅合金(ZDC)
	固定片---1702#不鏽鋼(SUS 304) ---702#鐵
表面處理	後鈕座---(S)噴砂、鍍鉻(B)電著塗裝黑色 固定片---702#材料本質