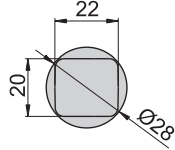
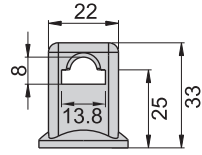


P4-15-8

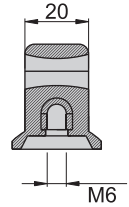
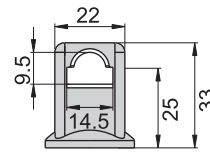
SCR6×15



P4-15-8



P4-15-9.5



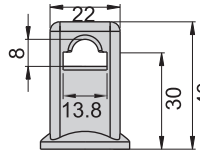
P3-15-8



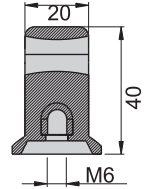
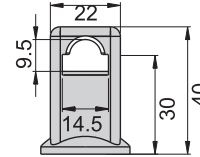
P3-15-9.5



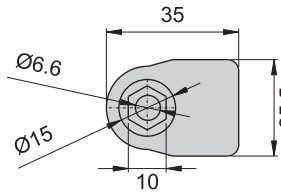
P3-15-8



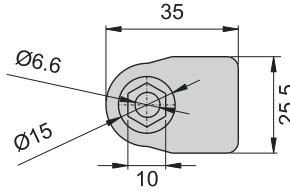
P3-15-9.5



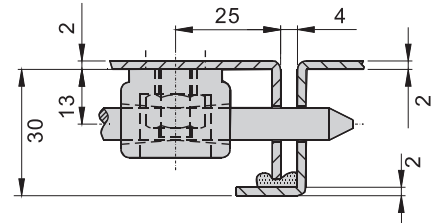
P5-15-8



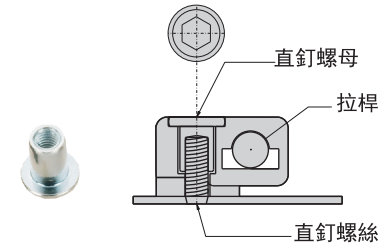
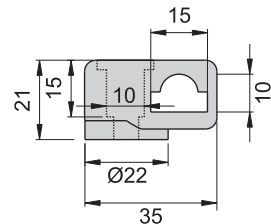
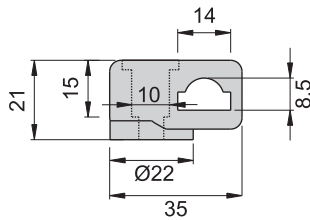
P5-15-10



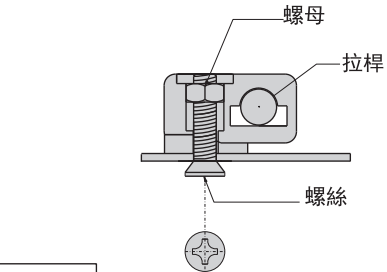
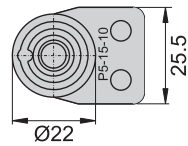
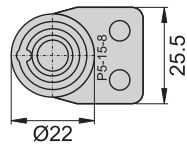
使用例



P5-15-8



P5-15-10



材 質	P3-15-8、P3-15-9.5、P4-15-8、P4-15-9.5---PA
	P5-15-8、P5-15-10---PA
表面處理	SCR6×15---鐵
	SCR6×15---電鍍
用 途	P3-15-8、P4-15-8、P5-15-9適用與8mm的長條圓柱連桿
	P3-15-9.5、P4-15-9.5、P5-15-10適用與9.5mm的長條圓柱連桿
	M5平頭內六角適用與P5-15-8、P5-15-10
	卡座P5-15-8、P5-15-10 適用與長條圓柱連桿，旋在焊接螺釘或埋頭螺釘上