

JKA-172-1(S)



JKA-172-2(S)



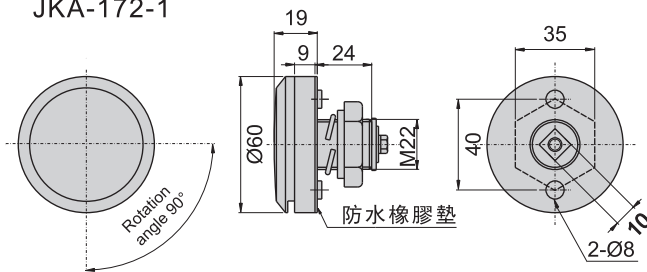
JKA-172-3(S)



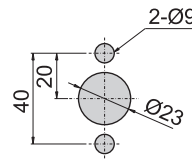
JKA-172-H



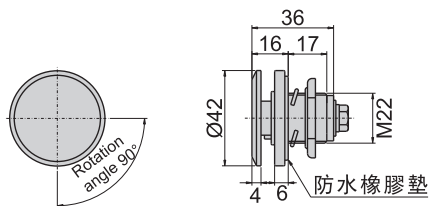
JKA-1172-1
JKA-172-1



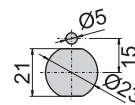
開孔尺寸圖



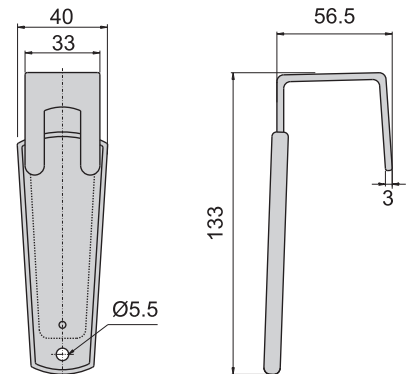
JKA-172-2



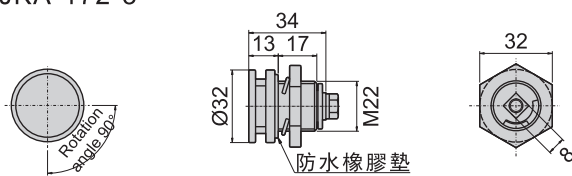
開孔尺寸圖



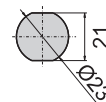
JKA-1172-H
JKA-172-H



JKA-172-3



開孔尺寸圖



材 質	JKA-1172-1 不鏽鋼 (SUS 316)
	JKA-1172-H 不鏽鋼 (SUS 304)
表面處理	JKA-172 鋅合金(ZDC)
	JKA-1172-1 鏡面研磨
特 徵	JKA-172 (S) 鍍鉻-光面
	防水型
適用門扇	JKA-1172-1 / JKA-172-1---700×500
	JKA-172-2---500×300
	JKA-172-3---350×200