

1028#-L



1028#-R



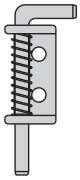
1029#-L



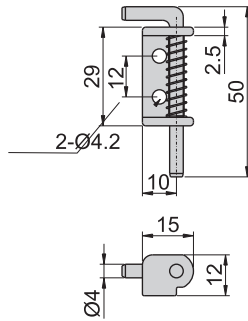
1029#-R



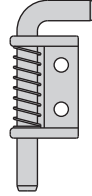
1028#-L
28#-L



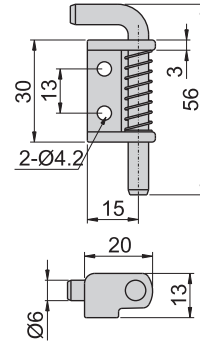
1028#-R
28#R



1029#-L
29#L



1029#-R
29#R



材 質	1028#、1029#---不鏽鋼 (SUS 304)
	28#、29#---鐵
表面處理	28#、29#葉子---材料本質
	心軸---電鍍

1062#-L



1062#-R



63#-L



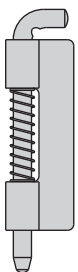
63#-R



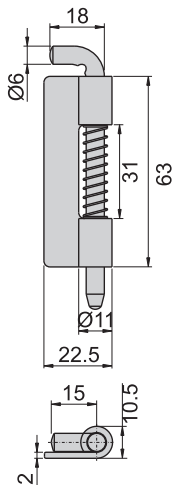
1062#-3



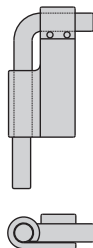
1062#-L
62#-L



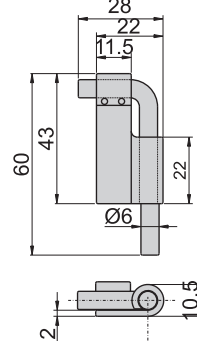
1062#-R
62#-R



63#-L



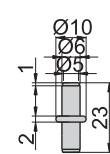
63#-R



62#-3



1062#-3
62#-3



材 質	1062#、1062#-3---不鏽鋼 (SUS 304)
	62#、63#、62#-3---鐵
表面處理	62#、63#葉子---材料本質
	心軸---電鍍
	62#-3---電鍍