

CPA-406-18-1



CPA-406-18-2



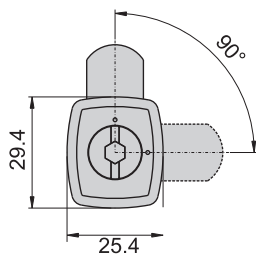
CPA-406-18-11



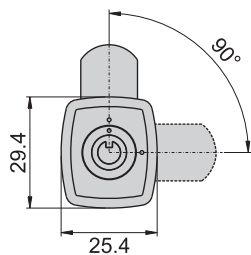
CPA-406-18-22



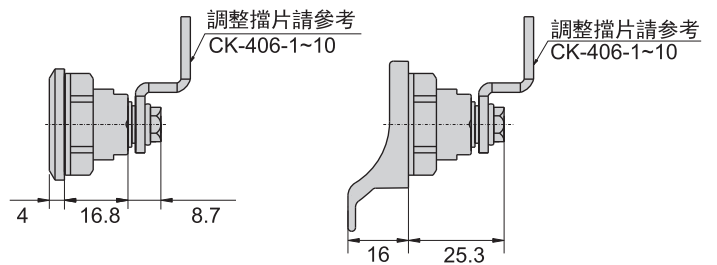
CPA-406-18-1



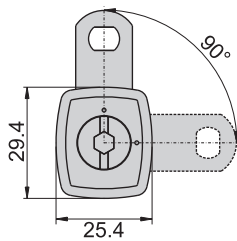
CPA-406-18-2



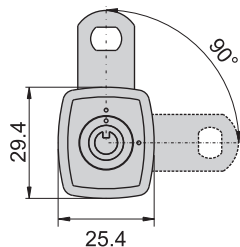
附取手參考圖



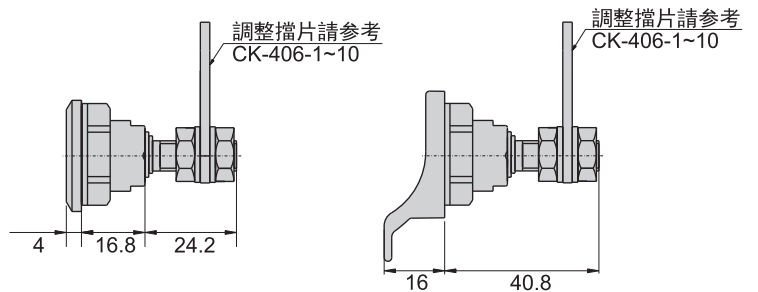
CPA-406-18-11



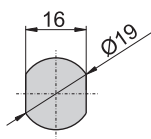
CPA-406-18-22



附取手參考圖



開孔尺寸圖



材 質	外殼、螺母---PA6-GF30 (黑色), 轉心---鋅合金 (ZDC)
表面處理	轉心---鍍鉻
特 徵	定位珠式鎖頭
適用門扇	200×150
備 註	另可選購搭配下列相關產品:
	NL-406-Ø32取手, 擋片CK-406-1至CK-406-10
	CPA-406-18-1/11內六角系列---鑰匙可選擇塑料 (CPA-406-18-1-PH)或鋅料 (CPA-406-18-1-H)
	CPA-406-18-2/22內圓孔系列---鑰匙可選擇鋅料 (CPA-406-18-2-H)